



The Innovative Barrel Processing Source Since 1983

## **BARREL PICKER OPERATION MANUAL**

SERIAL NO. \_\_\_\_\_ DATE OF MANUFACTURE \_\_\_\_\_



## **EQUIPMENT DESCRIPTION**

The barrel picker is a hydraulically controlled, articulating claw used to securely grip, transport, tilt and deposit 60-gallon barrels. It is designed to attach to the front rails of a drivable forklift.

Its features include: stainless-steel construction for durability and ease of cleaning, a simple rail-attachment system for drive-up connection, fully guarded pinch points, and a drop-off stand for storage.



## General Safety and Precautions

### Size and Shape Limits:

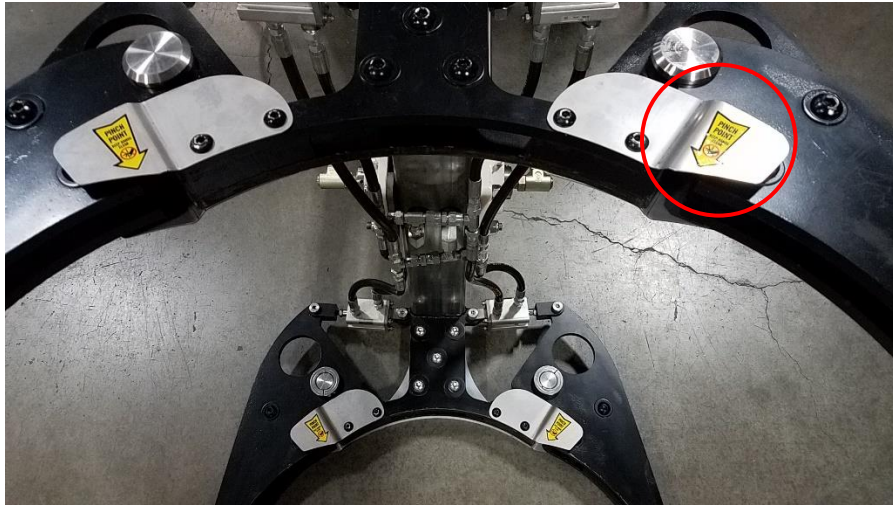
1. The barrel picker can handle barrels with **diameters between 23.5 and 28 inches at the heads and with lengths between 32.5 and 41.5 inches**. This assumes the barrel contents are a density less than or equal to that of water.
2. Do not attempt to lift barrels or other objects outside these dimensional limits.
3. Do not attempt to lift any object that is not cylindrical with the barrel picker.

### Warning Stickers:

Stickers have been placed in various locations to warn against pinch points. Pinch points and unstable/falling loads are hazards to be avoided while using the barrel picker. See warning sticker locations below. If any of these stickers are damaged or missing, immediately call the Tom Beard company using the number on the last page of this manual and we will send a replacement.







*\*Each unit comes with a data plate for safety, recalls and repair information.*



**INSTALLATION, START UP AND OPERATION****⚠ WARNING**

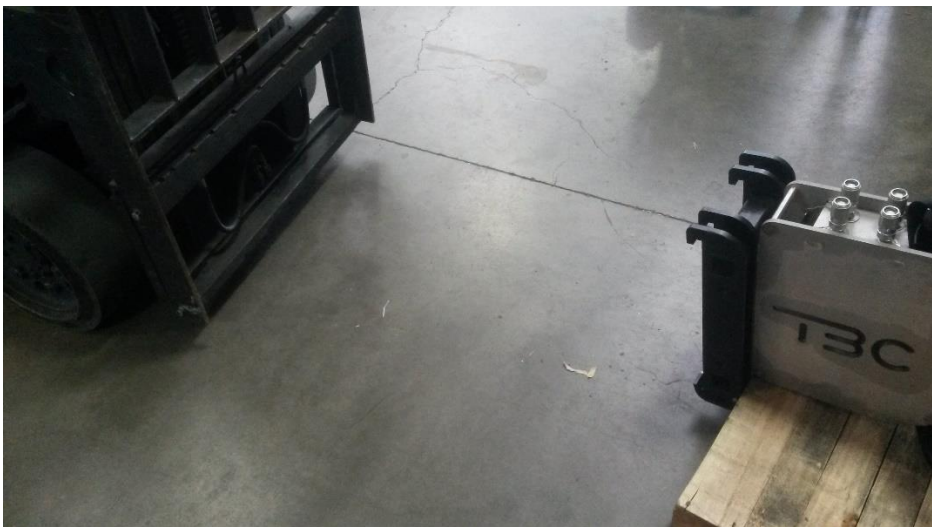
The barrel picker contains hydraulic fluid in its lines. Hydraulic fluid is extremely slippery and is a slip/fall hazard when spilled. Ensure lines are properly plugged when the picker is disconnected or in storage. Beware of fluid puddles anywhere around the picker. If a puddle is observed, clean it up immediately.

1. Visually inspect the unit for any signs of damage, cracks, broken hydraulic lines, fatigue or loose components. Any damaged components should be repaired or replaced immediately. See Tom Beard Company's contact information on the last page of this manual.
2. Visually inspect the clamp mechanism and hydraulic lines for any foreign objects that may have accumulated on or inside during storage or shipping. Remove any foreign objects before attaching to fork lift.

**⚠ WARNING**

While attaching and operating barrel picker, follow all safety precautions for safe forklift operation (See Title 29 C.F.R. Part 1910.178 – Forklift Safety Compliance).

3. Ensure forklift access to the barrel picker assembly. Align fork frame (forks removed) with attachment hooks end of barrel picker as shown below. Barrel picker should be aligned with the center of the fork frame.





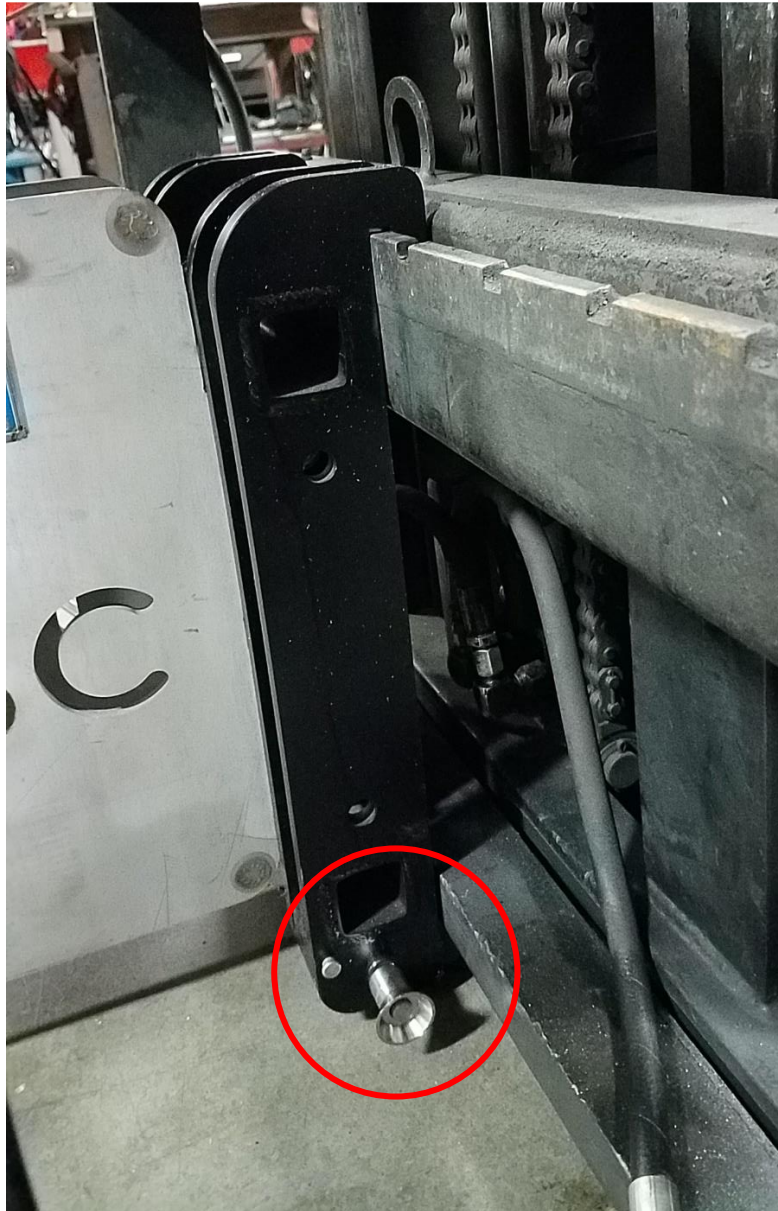
4. Slowly drive the forklift towards the barrel picker until the hooks on the barrel picker hang over the fork attachment rails.



5. Slowly raise the fork frame until the barrel picker begins to raise. Check to make sure it is fully engaged on the fork frame.

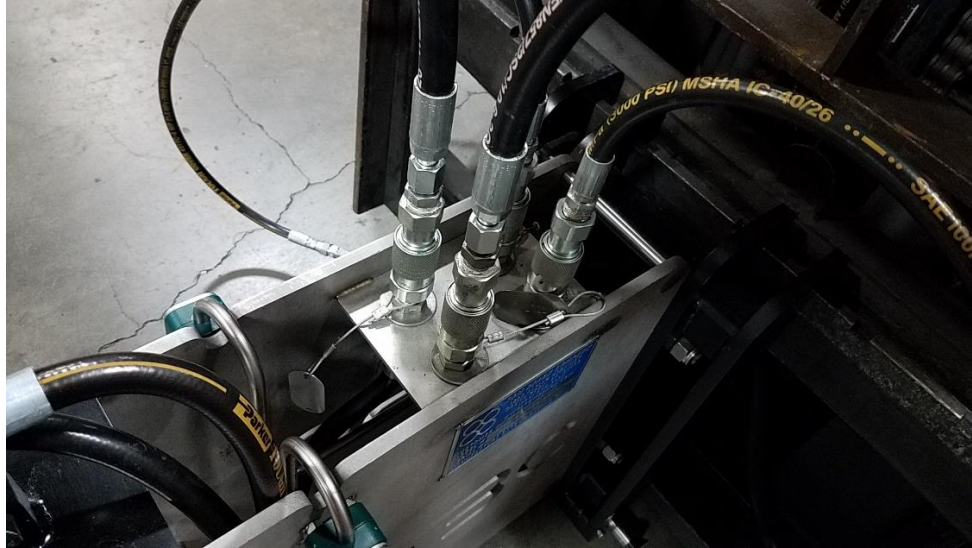


6. Insert locking pins (2 included) in the left and right sides of the frame attachment assembly. Pins should extend through the lower holes of the barrel picker frame hooks and through tabs on the fork frame.

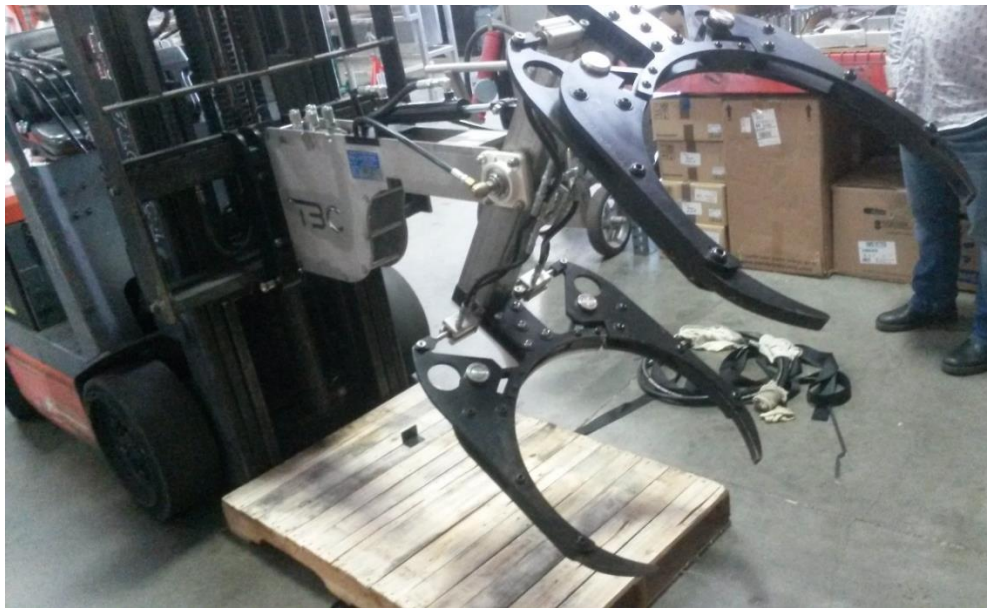




7. Connect the four hydraulic hoses from the forklift to the four quick-connect nipples on the barrel picker manifold. No need to connect hoses to any particular lever. **Once connected, it is recommended that each control lever be labeled with its corresponding barrel picker function.**



8. With the barrel picker attached and the hydraulic hoses connected, begin to manipulate the controls. Raise, tilt, open, close the picker as needed to gain a sense of control lever operation.





9. Once you are comfortable with the barrel picker operation, approach the barrel(s) to be moved.

**! WARNING**

Ensure the area is clear of personnel before operating barrel picker. (See Title 29 C.F.R. Part 1910.178 – Forklift Safety Compliance).

10. Center the claws vertically and laterally with the barrel and activate the lever to close the claws. Ensure that the claws are both securely engaged on the barrel.





11. Raise the barrel and transport it to its destination. Rotate the barrel to desired orientation (vertical or horizontal). In this case, the destination is a horizontal barrel rack.



12. Approach the destination slowly and lower the barrel into place.



13. Once satisfactorily centered, lower the barrel to the drop point and slowly open the claws to release it. Raise claws clear of barrel and back up until claws are completely clear of barrels/racks. Repeat steps 9-13 as necessary.



## **DISCONNECTION AND STORAGE**

1. To disconnect barrel picker, first drive it to its storage area. Lower it within a few inches of its storage frame or a pallet with the claws in the vertical position (barrel would be vertical).
2. Disconnect the four hydraulic hose quick-disconnects. If storing the barrel picker for a prolonged period, cap the hydraulic fittings to guard against foreign objects, oil leakage and dust.
3. Remove the two shear pins from the bottom of the fork connection frame.
4. Continue to lower the barrel picker into its final storage spot until the top hooks of the barrel picker frame detach from the forklift frame.
5. Back the forklift up until clear of the barrel picker assembly.

### **⚠ WARNING**

Always store the barrel picker assembly in a safely balanced position at a reasonable elevation. It is heavy and could be lethal as a falling object.



## SERVICE AND MAINTENANCE

### CLEANING

If needed, pressure washing and non-acidic detergents are recommended. After washing, always allow plenty of air exposure to allow the barrel picker to dry completely.

### MAINTENANCE

#### EACH USE:

1. Visually inspect the unit for any signs of damage, cracks, fatigue or loose components. Any damaged components should be repaired or replaced immediately. See P&L Specialties' contact information on the last page of this manual.
2. Inspect hydraulic hoses for leaks. Repair if necessary.
3. Remove any accumulated or loose material from the unit.
4. Lubricate the claw pivot pins with penetrating lubricant as needed.

#### MONTHLY/SEASONAL:

- 1) Lubricate zerk fittings on both central tilt bearings (see location below).



**\*Coverage in outdoor and/or humid climates may cause condensation to accumulate. After storage inspect unit for condensation build up and ensure unit is thoroughly dry.**

### **Sources Cited in the Barrel Picker Operation Manual**

- 1) OSHA 3170-02R: Safeguarding Equipment and Protecting Employees from Amputations, p. 28-30
  - References ASME B20.1 and CEMA in safeguarding practices around equipment.
- 2) CEMA Brochure No. 201-2006, Oct. 2013 – Safety Label Guidelines
  - This publication outlines CEMA-approved safety stickers, their meanings and suggested locations.
- 3) Title 29 C.F.R. Part 1910.147 Subpart O – Machinery and Machine Guarding
- 4) Title 29 C.F.R. Part 1910.178 – Forklift Safety Compliance



Mailing Address - 1650 Almar Parkway, Santa Rosa, CA 95403

Phone - (707) 573-3141

Fax - (707) 573-3140

E-mail - [sales@tombeard.com](mailto:sales@tombeard.com)